

Product Specifications		PTZ310	PTZ330
Camera	Image Sensor	1/2.8" 1080p 60fps Exmor CMOS	
	Effective Picture Elements	Approx. 2.1 Megapixels	
	Output Resolution	Auto, 1080p/60, 1080p/59.94, 1080p/50, 1080i/60, 1080i/59.94, 1080i/50, 1080p/30, 1080p/29.97, 1080p/25, 720p/60, 720p/59.94, 720p/50	
	Minimum Illumination	0.4 lux	0.3 lux (IRE50, F1.6, 30fps)
	S/N Ratio	> 50dB	
	Gain	Auto / Manual	
	TV Line	800 (Center/Wide), 700 (Corner/Wide)	600 (Corner/Wide)
	Shutter Speed	1/1s to 1/32,000s	
	Exposure Control	Auto, Manual, Priority AE (Shutter, IRIS), BLC	
	White Balance	Auto / Indoor / Outdoor / One-push / Manual (2500 - 10000)	
	Optical Zoom	12X	30X
	Digital Zoom	12X	
	Horizontal Viewing Angle	72.5° (Wide) ~ 6.3° (Tele)	67° (Wide) ~ 2.3° (Tele)
	Focal Length	f = 3.9mm (Wide) ~ 46.8mm (Tele)	f = 4.3mm (Wide) ~ 129mm (Tele)
	Aperture (Iris)	F = 1.6 (Wide) ~ 2.8 (Tele)	F = 1.6 (Wide) ~ 4.7 (Tele)
	Minimum Working Distance	0.3m (Wide), 1.5m (Tele)	0.01m (Wide), 1.2m (Tele)
	Pan/Tilt Angle	Pan : +170°, Tilt : +90°/30°	
	Pan/Tilt Speed (Manual)	Pan : 0.1 ~ 100°/sec, Tilt : 0.1 ~ 100°/sec	
	Preset Speed	Pan : 200°/sec, Tilt : 200°/sec	
	Preset Position	10 (IR), 255 (RS232)	
Camera Control - Interface	RS232 (DIN8) / RS422 (RJ45)		
Camera Control - Protocol	VSCA (RS232/RS422/IP), CGI (IP)		
Image Processing	Noise Reduction (2/3D), Flip, Mirror		
Power Frequency	Auto / 50Hz / 60Hz		
Audio	Audio - Channel	2ch (Stereo)	
	Audio - Codec	AAC-LC (48/44.1/32/24K), G.711/PCM	
	Audio - Sample Rate	48 / 44.1 / 32 / 24 / 16 / 8kHz	
Interface	Video Output	3G-SDI, HDMI, IP, USB	
	Audio Output	3G-SDI, HDMI, IP, USB	
General	Power Requirement	AC100V-AC240V to DC12V/5A	
	PoE	PoE+ (IEEE 802.3at), Class 4	
	Operating Condition	Temperature : 0°C ~ +40°C ; Humidity : 20% ~ 80%	
	Storage Condition	Temperature : -20°C ~ +60°C ; Humidity : 20% ~ 95%	
	Dimensions	L = 180mm, W = 145mm, H = 183.5mm	
	Weight	1.741kg	1.62kg
	Application	Indoor	
	Security	Kensington Slot	
	Remote Control	Infrared	
	Accessory	Remote Control, 12V/5A Power Adapter	
IP Streaming	Resolution	1920x1080, 1280x720, 960x540, 640x480	
	Network Video Compress Format	H.264 (High Profile), MJPEG	
	Maximum Frame Rate	H.264:60fps (1920x1080), MJPEG:30fps (1920x1080)	
	Bit-rate Control Mode	VBR / CBR (selectable)	
	Range of Bit-rate Setting	512Kbps ~ 32Mbps	
	Network Interface	10 / 100 / 1000Base-T	
USB	Multi-stream Capability	2	
	Network Protocol	IPv4, TCP, UDP, ARP, ICMP, IGMP, HTTP, DHCP, RTP / RTCP, RTSP, RTMP, VSCA over IP	
	Connector	Micro-USB 2.0	
	Video Format	YUV, MJPEG, H.264	
WebUI	Maximum Video Resolution	Up to 1080p	
	USB Video Class	UVC1.1	
	USB Audio Class	UAC1.0	
Software Tools	Live Video Preview	Yes	
	Camera PTZ Control	Pan / Tilt / Zoom / Focus / Preset Control	
Warranty	Camera/Image Adjustment	Exposure / White Balance / Picture	
	Network Configuration	DHCP / IP Addr / Gateway / Netmask / DNS	
Software Tools	Device IP Searching, Configuration Tool	Windows Application	
Warranty	Camera	3 Years	
	Accessories	1 Year	

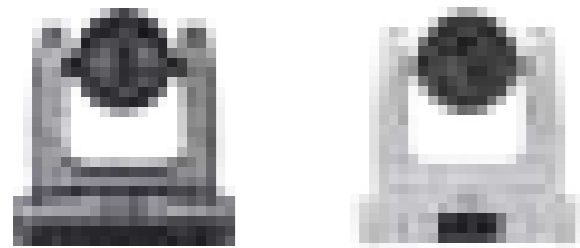
PTZ310 / PTZ330

Professional PTZ Camera

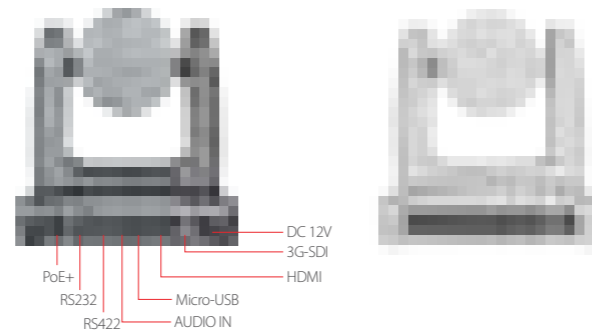


Hardware Specifications

Front Panel



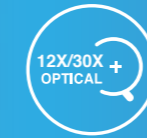
Back Panel



Distributor/Dealer

Capture Events in Lifelike Quality

AVer PTZ310/PTZ330 Professional PTZ Cameras provide the superior video quality and versatility you need to record and share events around the world! They are available in white or grey to suite every classroom, hospital, or performance venue.



12X/30X Optical Zoom



SmartShoot



SmartFrame



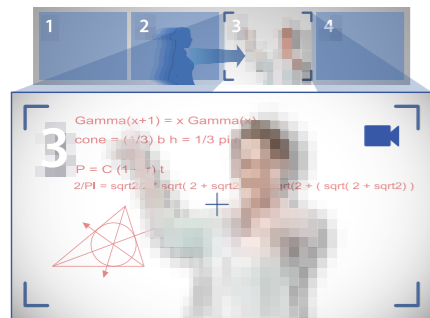
4 Output
HDMI/USB
IP/3G-SDI



Full HD 1080p60



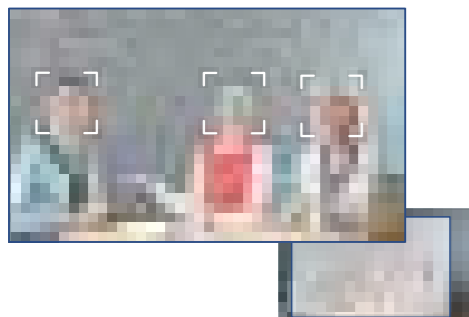
3-Year Warranty



Seamlessly Track in Preset Zones

AVer **SmartShoot** optimizes your camera controls for automatic and seamless content capturing between preset areas, enabling you to create an uncompromising multi-camera feel with just one PTZ310/PTZ330. Save time and effort while unlocking a huge variety of options for your video.

SmartFrame



Ideal FOV in Seconds

AVer's new **SmartFrame** function provides one-touch face targeting technology that lets you quickly create stunning video content. SmartFrame instantly adjusts your FOV to fit everyone on-screen so you can start recording presentations, lectures, and more without hassle. Perfect for capturing multiple people, SmartFrame makes creating video content easy and enjoyable.

Versatile Motion Control

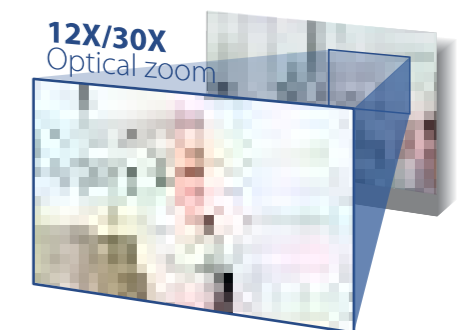
The PTZ310/PTZ330's advanced Motion Control Settings allow for precise camera movement during recording. Pan/tilt rotation maneuvers as small as 0.1° and as large as 200° per step with customizable speed controls allow you to fully optimize your video recording.



Slow/Fast/Smooth (0.1°~200°/sec)

12X/30X Optical Zoom

Get resounding image quality with 12X/30X optical zoom. People, products, or images are always crystal clear with the PTZ310/PTZ330's powerful PTZ Camera.



Cover Every Angle with Prolific Presets

Preset the PTZ310/PTZ330 with up to 255 different locations through VISCA via RS232 and RS422 functionality. In addition, you can set 10 preset locations with its simplified IR remote, which gives you easy manual control of the recording view.

