

AVer



**MATRIX YOUR
MULTIMEDIA
WORLD**

**AVer MT300
Matrix Tracking Box**





Take your audio-visual experience to the next level with the MT300 Matrix Tracking Box. AVer's state-of-the-art multimedia device makes it easy to manage and control multiple sources through one unified platform. From meetings and training sessions to classrooms, the MT300 is perfect for any size requirement. With the MT300, you can easily mix-and-match video, audio and computer devices for the ultimate multimedia experience. The future of A/V management is here.



Supports NDI® HX2 Cameras Outputs



Supports NDI® HX3 Cameras Inputs



Up to 4K 60 fps Output Resolution



HDMI In/Out



USB In/Out



PoE+



RS-422 Control



Intuitive Web UI



Built-in PTZ Link Premium



5 Years Warranty

Compact. Just Right.

The MT300's sleek and modern appearance is complemented by its compact design, making transportation and storage effortless. Additionally, its ingeniously engineered compact design allows for flexible installation options.



Device Management. Streamlined.

Enhance your streaming performance by viewing up to 4 live videos. With MT300's wide range of video inputs and outputs, you are free from the hassle of constantly plugging and unplugging devices.



Seamless Deployment. Versatile Settings.

The MT300 has been designed to suit any use case with its all-in-one camera control and video switching capabilities. Additionally, its PoE+ function allows you to get started shooting in no time without any additional power supply.



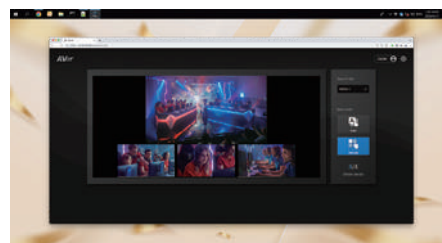
Existing Devices. Integrated.

The MT300 offers the flexibility to either bring your own device (BYOD) or integrate it with your existing devices, while leveraging its multimedia capabilities to take your presentation experience to the next level.



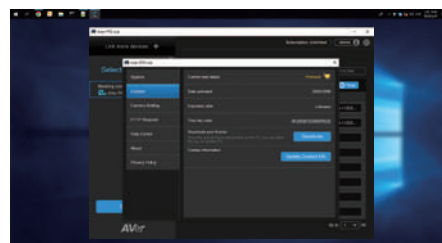
Web UI. Remote Management.

The simple web-based interface enables convenient remote access and management of cameras. Additionally, users can effortlessly create personalized profiles including display layouts to access their preferred settings promptly and efficiently.



PTZ Link Premium. Embedded.

It takes one step to convert AVer's PTZ camera into a voice-tracking camera with PTZ Link Premium. Built-in PTZ Link Premium functionality, you can create more device groups and mic channels, and automatic video switch combining with human detection auto tracking, making it ideal for presentation needs in hybrid environments.



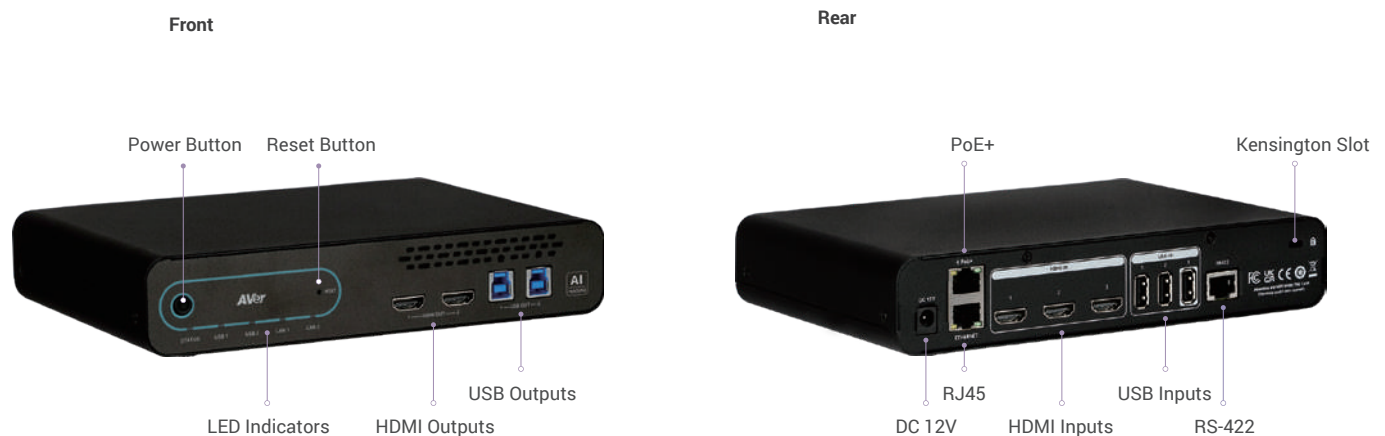
Product Specifications

Power requirement	AC 100 - 240V to DC 12V/1.5A	LED indicator: STATUS	Orange: power on Green: operating Green (flashing): firmware upgrading
Power consumption	18W		
Dimensions (W x D x H)	15.0 x 21.0 x 4.3 cm		
Net weight	0.9 (± 0.1) kg	LED indicator: USB	Green: connected and standby Green (flashing): UVC/UAC streaming
Storage conditions	Temperature: -20°C to +60°C Humidity: 20% to 95%	LED indicator: LAN	Green: connected
Inputs	HDMI x 3 USB 2.0 Type-A x 3 RS-422 x 1 RJ-45 x 1 PoE+ x 1	Resolution	Inputs: up to 1080p 60 fps Outputs: up to 4K 60 fps
		Operating conditions	Temperature: 0°C to +50°C Humidity: 20% to 80%
		Outputs	HDMI x 2 USB 3.0 Type-B x 2
Communication protocol	RS-422	PoE+	Yes, 42.5V to 57V 0.6A
NDI® HX2 camera output	Yes	Security	Kensington lock
NDI® HX3 camera input	Yes	Certification	CE, FCC, IC, VCCI, UKCA, KC, PSTI
Buttons	Power, Reset	Warranty	5 years
Mounting bracket	Yes		
Package Contents			
MT300, Power Adapter, Power Cable, Cable Fixing Plate (x2), Cable Tie (x13), 3.0 x 5 mm Flat Head Screw (x5), 3.0 x 5 mm Truss Head Screw (x4), M3 x 10 mm Screw (x4), Rack Mount Bracket (x2), USB 3.0 Cable (x2), RS-422 Cable, Quick Start Guide, Warranty Card*			
Optional Accessories			
Server Rack Mount, 3.0 x 5 mm Flat Head Screw (x3), 3.0 x 5 mm Truss Head Screw (x2)			

* For Japan only.

** Specifications may vary depending on location and are subject to change without notice.

Product Appearance



©2025 AVer Information Inc. All rights reserved.
All brand names and logos are trademarks of their respective companies.

www.aver.com



Distributor/Dealer